



South Bucks Partnership Annual Report—June 2013

Contents:

Introduction	3
Partnership Vision	4
Sustainable Community Strategy 2009-2026 - Aims	5
Sustainable Community Strategy 2009-2026 - Challenges	6
Sustainable Community Strategy 2009-2026 - Achievements and Desired Outcomes by Aim	7
Priorities for 2013-14	12
Performance Management	13
Performance Indicator Table	14



South Bucks Partnership Annual Report 2013

This will be the fourth and last South Bucks Partnership Annual report, as we are in the process of merging with the Chiltern Community Partnership as part of the Chiltern District and South Bucks District Councils' programme to develop shared services. This will generate cost savings as well as reducing duplication and the number of Partnership meetings our public sector partners will have to attend. We hope that the new, merged partnership will have a broader range of perspectives and be stronger and more influential. With continued public spending cuts, this is one example of how we are working hard with our partners to make a difference at the lowest possible cost.

At the start of the year, we had committed a small amount of grant funding to fourteen youth related projects, most of which are now completed. You will find out more about the impact of these projects within this report, from reducing the incidents of anti-social behaviour to developing skills in young people who are not in employment, education or training (NEETS) to enable them to find employment.

During 2012, we played host to the 2012 Games, which were very successful. As a result, Dorney Lake has been added as a venue to the World Cup Regatta Schedule from 2013, having come top of the visitor satisfaction rating for all Games venues, at 97% satisfied. Cultural events were also successful with 400 people attending a theatre performance in Burnham and the Lord Desborough exhibition being well attended. Local businesses which chose to become involved reported robust business and 15,000 residents and 200 volunteers participated in the torch relays in Burnham, Denham and Dorney.

This all contributed to the delivery of the South Bucks Sustainable Community Strategy, based on a shared vision and your priorities.

Whilst the Partnership is evolving, we will continue to work together to improve the lives of South Bucks people, making them safer, healthier, more prosperous and united. Together, we can make a difference.

Cllr Adrian Busby
Chairman of the South Bucks Partnership.

South Bucks Partnership
includes representatives from:

- All Parish/Town Councils
- County Council
- District Council
- Business and learning sector
- Voluntary and community sector
- Faith community
- Thames Valley Police
- Bucks Fire and Rescue

'Have your say'

'Have your say' on our website:
www.southbucks.gov.uk

or email us at: haveyoursay@southbucks.gov.uk

or write to us at our freepost address:

'Have your say'
South Bucks District Council, Freepost - SCE 9630, Capswood, Oxford Rd,
Denham,
Uxbridge, UB9 4BR.

We want to know your views on what the Partnership is trying to achieve.
Thinking what is important to your community:

- Do you think we have got the right vision for the future?
- Are there any other areas that we should be considering?
- What are your views on the priorities we have set for the coming year?

Sustainable Community Strategy 2009–2026

The Sustainable Community Strategy was published by the South Bucks Partnership in 2009 and sets out the long-term aspirations and vision of the community in South Bucks. It was founded on town and parish appraisals, together with individual consultations and input from all the public sector organisations operating in South Bucks, the voluntary and community sector, business and representatives from the faith community. The vision directly influences the work of partner organisations such as the police, local councils, community and voluntary organisations and fire and health services so that all can work effectively together for the benefit of residents. It is summarised below.

South Bucks will be a place with:

- ◆ A prosperous and diverse economy, with more people choosing to live and work locally;
- ◆ Green space, thriving and attractive towns and villages, where our heritage is protected and more affordable homes are available to help meet community needs;
- ◆ A sustainable environment where people take pride in their community and live low carbon lives;
- ◆ Lower levels of crime and anti-social behaviour, where the police are an active part of the community and people are knowledgeable about how to prevent crime;
- ◆ Good health which is enjoyed by all including those in deprived groups and where people take responsibility for their own well-being;



Our Aims

Thriving Economy

lifelong enterprise, the entrepreneurial heart of Britain



Sustainable Environment

protecting our heritage, protecting our future



The Sustainable Community Strategy has five aims which are the result of consultation with South Bucks people. These form the main themes within the strategy - see pages 7 to 11 for our priorities and achievements by theme.

Safe Communities

being safe, feeling safe



Health and Well-Being

healthier, happier and longer lives

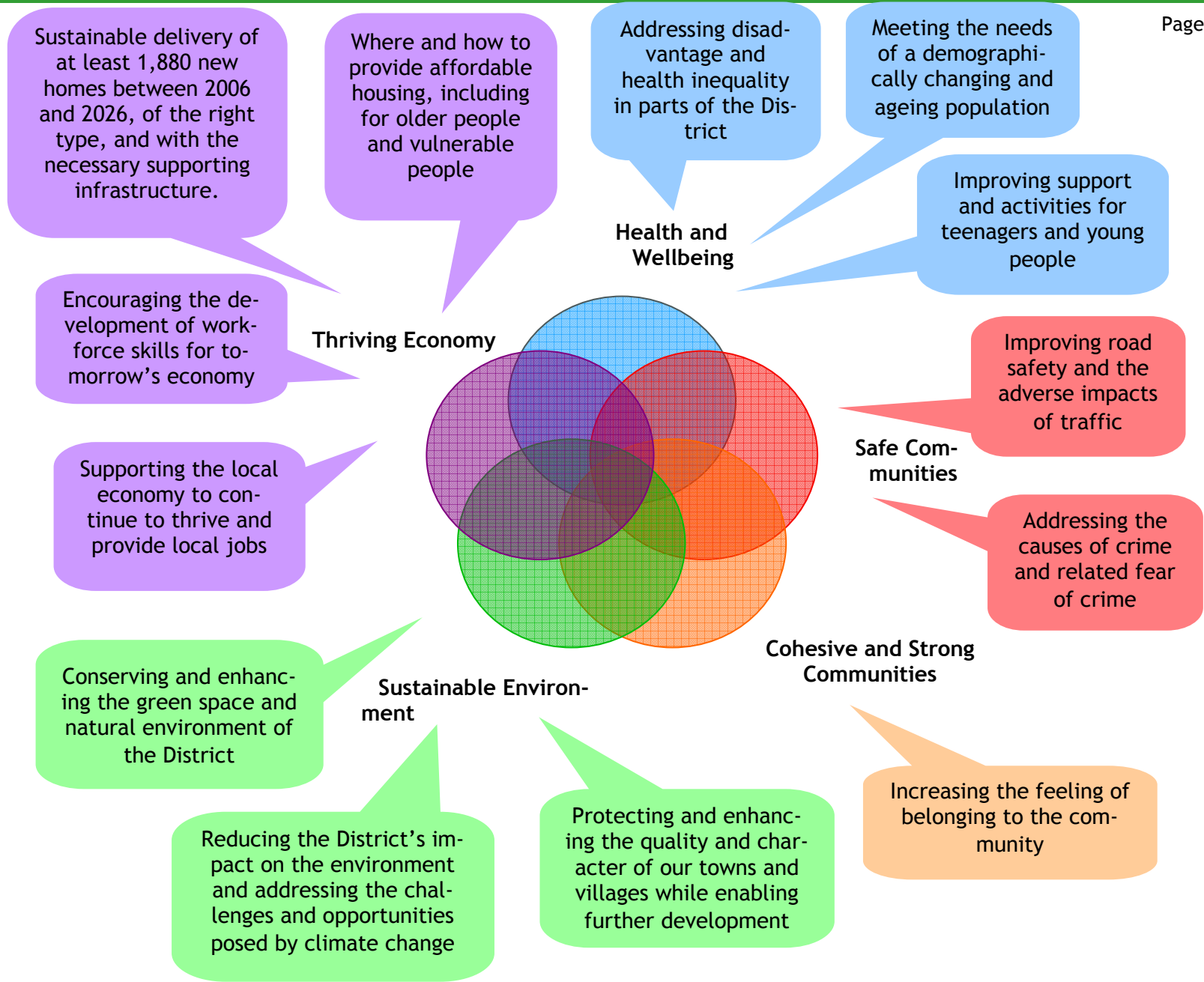


Cohesive and Strong Communities

strong, confident and active communities



Summary of Key Challenges



Aim 1: Thriving Economy

Some of last year's achievements:

- ◆ Partners worked together to improve signposting on the South Bucks District Council's business pages, <http://www.southbucks.gov.uk/business/default.aspx>.
- ◆ A leaflet was developed to inform people about Welfare Reforms and their impacts and those affected by housing benefit changes were identified and written to.
- ◆ Dorney lake was top of the visitor satisfaction rating of all Games 2012 venues, at 97%.
- ◆ 80% of Games spectators used public transport, with walk-ups to the northern gate increasing business in Dorney Village.
- ◆ Out of 300,00 Games visitors to Dorney Lake, there were only 5 arrests, all for ticket-touting.
- ◆ 15,000 residents and 200 volunteers participated in torch relays within South Bucks.
- ◆ Dorney Lake has been added to the World Cup Regatta schedule, from 2013.
- ◆ A series of cultural events complemented the Games, including a theatre performance in Burnham, the Lord Desborough exhibition in Taplow Court and Langley Park joining in the national bandstand marathon.

- ◆ A 2012 Games archive has been set up: www.dorneygamesarchive.com .
- ◆ Work continued to expand superfast broadband across the District in Beaconsfield, Burnham, Denham, Farnham Common, Gerrards Cross and Iver.

Our priorities:

- ◆ Ensure local businesses and families know where to find support during times of growth and in difficult times
- ◆ Advise local businesses on environmental, safety and health issues
- ◆ Encourage understanding between educational institutions and employers on the skills required both now and in the future
- ◆ Raise the qualifications and skills levels within education and employment including the basic literacy and numeracy skills of those entering the workforce for the first time



- ◆ Support delivery of more affordable housing of a type that meets the needs of local people entering the housing market, families and an ageing population
- ◆ Retain employment land
- ◆ Encourage appropriate development to support the community
- ◆ Carefully plan infrastructure to meet community needs whilst being sensitive to the environment
- ◆ Seek contributions from developers towards new infrastructure
- ◆ Maintain essential services within our high streets and town and village centres
- ◆ Attract appropriate inward investment and support new business start-ups.

Aim 2: Sustainable Environment

Some of last year's achievements:

- ◆ The Community Energy Champions programme was launched with 43 champions across Bucks trained on energy efficiency. They have raised awareness within businesses, schools and neighbourhoods.
- ◆ Bucks Business First launched a new service in January to provide online and telephone advice to businesses, signposting them to carbon saving sites. It includes an online tool to help make energy cost savings: www.bbf.uk.com/bsl and select "utilities".
- ◆ The Low Carbon Chilterns Co-operative, formerly based in Chiltern District, has widened their area of operation across South Bucks. The Co-operative helps community organisations access help, support and grant funding to reduce energy costs.
- ◆ The Green Deal was launched nationally in January, with South Bucks District Council becoming a founding member of the Green Deal Together Community Interest Company within the Thames Valley, providing local, trusted advice, support and implementation of energy efficiencies to both homes and businesses across South Bucks: http://www.southbucks.gov.uk/environment_planning/sustainability/green_deal.aspx
- ◆ Funding granted to the Burnham Youth Club gardening project transformed some derelict land into a garden. The young people planted, harvested and cooked their own produce.

- ◆ The Home Energy Efficiency Act (HEFA) 1995 has been strengthened, leading to a South Bucks and Chiltern Joint Action Plan. The Plan sets out how a 30% improvement on home energy efficiency can be achieved across the Districts on a two-year rolling basis.

Our priorities:

- ◆ Reduce carbon emissions and greenhouse gases in the District and adapt to the impacts of climate change
- ◆ Promote energy saving including the use of alternative fuels and forms of transport and improve energy efficiency of existing buildings, especially for vulnerable occupants, in light of rising energy costs
- ◆ Reduce our consumption of resources through purchasing decisions, improved monitoring and reduced energy use
- ◆ Keep public places clean and tidy
- ◆ Minimise air pollution, including enabling home working through improved technology



- ◆ Safeguard our Green Belt and avoid inappropriate development
- ◆ Shape development in the built environment to conserve and enhance the character of the local area whilst meeting changing local needs
- ◆ Protect and enhance the historic environment, natural environment and open spaces, promoting biodiversity
- ◆ Manage flood risk
- ◆ Minimise waste by reducing, reusing and recycling as much waste as possible
- ◆ Encourage more sustainable forms of transport and increase travel choices to help reduce congestion
- ◆ Reduce the environmental impact of transport, particularly freight movement.

Aim 3: Safe Communities

Some of last year's achievements:

- ◆ Funding was granted to 3 youth projects specifically targeted at reducing anti-social behaviour (ASB): Beaconsfield Youth Club Aspirational Speakers, Wake-up Wednesdays and AddAction Friday Nights. All three provide places for young people to meet, with youth workers present to provide support. About 150 young people have benefitted and antisocial behaviour has reduced as a result.
- ◆ A non-contact boxing club and mountain bike programmes were also used to reduce ASB.
- ◆ Three further youth projects targeted reducing the numbers of young people not in employment, education or training by giving them support, skills and training to make them more employable. Growing Enterprises, Burnham Upper School vehicle technology course and mobile van events helped over 200 young people, with 16 achieving workplace qualifications in the first year of the projects.
- ◆ Mobile CCTV and property marking kits continue to be used in the fight against crime, with victims being offered funded security investments and other support to reduce further victimisation.
- ◆ The integrated offender management programme continues to reduce repeat offending in the area.
- ◆ Press releases and social media are being used to inform and educate residents on crime prevention.



Our priorities:

- ◆ Reduce the impact of anti-social behaviour in our community
- ◆ Reduce serious acquisitive crime
- ◆ Continue to tackle the root causes of crime including working borders to reduce offenders travelling into South Bucks from other areas
- ◆ Maintain police resources to match provision in the rest of Buckinghamshire
- ◆ Help local people to feel safe by encouraging responsible and positive reporting of crime in the local media
- ◆ In partnership with local residents and businesses, clean up the environmental impacts of crime, such as graffiti
- ◆ Empower local people to reduce their risk of becoming a victim and encourage community involvement
- ◆ Support victims of crime
- ◆ Increase public confidence by ensuring residents know what is being done to reduce crime and disorder
- ◆ Reduce drug, alcohol and substance misuse
- ◆ Improve Road Safety
- ◆ Ensure the safety of young people and vulnerable adults
- ◆ Continue to link up Agency support via the Home Safety Check initiative
- ◆ Reduce the risk of death or injury from domestic fires and promote fire safety
- ◆ Design developments to minimise opportunities for crime

Aim 4: Health and Well-being

Some of last year's achievements:

- ◆ A small amount of funding helped to kick start 14 youth projects, some of which have been detailed under other themes. Four of the projects specifically target health and wellbeing: CPR training for Scouts, Malthouse Square Recreation Ground 5-a-side goal posts, a BMX skate park in Beaconsfield and a youth tennis project in Dorney. As well as encouraging healthy activities, these projects provide a place for young people to go to and something for them to do, which in turn has also had a positive effect on anti-social behaviour.
- ◆ The Families First Project, led by Bucks County Council, continued to identify and work with families with complex needs.
- ◆ Free access to healthy activities continues for those in poverty, such as holiday programmes for young people, simply walks and Nexus health club free pass.
- ◆ A Health and Wellbeing event was held in Iver in November 2012, providing a local one-stop shop to support and advise people on health issues.
- ◆ The NHS Health Check— a cardiovascular risk screening programme—continues to be rolled out across GP practices in South Bucks. In the first 6 months of the year, 17,000 people were invited to participate, with 10,000 attending. It involves a blood test, risk calculation and healthy lifestyle support and advice.

Our priorities:

- ◆ Improve mental health
- ◆ Reduce obesity, particularly in young people
- ◆ Protect and enhance areas of recreational open space
- ◆ Increase participation in cultural and sporting activities through businesses, schools, leisure and community organisations by using the 2012 countdown to inspire communities
- ◆ Maintain health and safety standards in workplaces and food outlets
- ◆ Reduce the number of smokers and enforce the law that bans smoking in public buildings
- ◆ Reduce the number of high risk and increasing risk drinkers
- ◆ Reduce health inequalities and ensure comprehensive information on support and services is available to everyone, particularly the very hard to reach groups
- ◆ Help older people stay in their homes for longer
- ◆ Improve the health of the elderly in sheltered accommodation through exercise
- ◆ Secure the provision of more specialist accommodation for the elderly



- ◆ Improve affordable warmth
- ◆ Promote IT skills for older people to enable them to access self help and shop online
- ◆ Secure the provision of more positive activities for young people whilst minimising any adverse impact of the changes in youth provision.
- ◆ Close the gap between the most advantaged and disadvantaged young people
- ◆ Work more closely with relevant agencies to improve help for those at risk of homelessness
- ◆ Find the right accommodation for those with special needs
- ◆ Improve accessibility of services and support for all residents
- ◆ Target services tailored to meet the needs of individuals and look for opportunities to bring services together and reduce social isolation particularly in rural areas
- ◆ Improve rural transport and access to services
- ◆ Improve access to recreational opportunities, particularly for hard to reach groups

Aim 5: Cohesive and Strong Communities

Some of last year's achievements:

- ◆ Three of the youth projects part funded by the partnership supported community groups to expand what they are offering within the community: funding to support the set-up of 1st Stoke Poges Rainbows, Latimer Minster Market Garden and 1st Iver Scout kitchen overhaul. More than 180 young people have benefitted from these projects so far.
- ◆ A one-stop shop, <http://ww.bucksconnect.org.uk/> was launched in April 2012 to improve signposting to services available across Bucks.
- ◆ A volunteering event was held in Beaconsfield in May, led by Community Impact Bucks and Bucks County Council, to help remove the barriers to volunteering. Surveys were undertaken and analysed and feedback was given to organisations seeking volunteers.
- ◆ An event in Fulmer on 23rd June 2012 was used as a pilot to increase volunteering. Letters were sent to residents inviting them to attend to find out how to volunteer. 7 volunteers signed up on the day. A best practice volunteering guide building on this pilot and the good work carried out by Community Impact Bucks is underway.
- ◆ Plans are in place to apply for funding to enable the roll-out of the successful pilot community

transport hub in Chiltern to be rolled out to South Bucks.

- ◆ Worked with One Can Trust to develop and roll out food bank model to support rural communities, rather than residents required to visit main towns to collect food parcels.

Our priorities:

- ◆ Support a thriving community and voluntary sector to enable active and cohesive communities through:
 - Increasing community participation and volunteering
 - Encourage employees of local businesses to volunteer
- ◆ Recognise and support good community leaders (including elected representatives)
- ◆ Encourage people, including the young, to have a say in decision-making and find local solutions to community issues
- ◆ Improve community spirit (for example increased contact and understanding between people from different parts of the community)
- ◆ Promote and support community and local events, and community information with focal points such as post offices, village halls, libraries
- ◆ Reduce social isolation particularly for older people and in rural areas
- ◆ Whole life-cycle support to enable people to be supported at different stages of their lives
- ◆ Tackle inequalities through better engagement with vulnerable and ethnic groups, including disabled people
- ◆ Ensure information about all services (statutory, community and voluntary) is well publicised and residents know what support is available.



Our Priorities for 2013–2014

At the end of 2012/13, Partners agreed to trial a way forward by merging the South Bucks Partnership with the Chiltern Community Partnership to generate cost savings and reduce duplication as well as aiming to build a stronger and more influential partnership for both Districts. During the early part of 2013/14, Partners agreed representation at the new, merged Local Strategic Partnership and Steering Group. The plan is to hold 3 to 4 Steering Group meetings and 2 to 3 Partnership meetings per year. Early priorities were identified as follows:

- Agree membership and Terms of Reference for the new merged groups.
- Forge links with the Community Partnership, Local Enterprise Partnership and other relevant groups.
- Develop a refreshed, combined Sustainable Community Strategy setting out the aims of the Partnership to 2026.
- Keep a watching brief on the impact of Welfare Reform, housing and affordable housing and the Bucks-wide Families First project.



Performance Management

The South Bucks Partnership Implementation Group monitors achievement against the South Bucks Sustainable Community Strategy and reports back to the South Bucks Partnership.

A regular self-assessment is undertaken of the performance of the South Bucks Partnership to look for opportunities to improve the way the partnership operates.

When working in partnership it is extremely important to be able to trust the quality of data from all partners, therefore a data quality protocol was established for this purpose. All organisations have their own individual data quality strategies and policies, and all local authorities within Buckinghamshire have signed up to the same data quality framework to ensure a consistent approach to data quality across the county.

To maintain focus on partnership performance, a small number of indicators available at South Bucks level have been chosen for the performance table at the end of this section, where they are the result of partnership working.



Performance Tables 2012/13

Key: Have we improved compared to 2011/12? ↑=Better, ↔=Same, ↓=Worse. / Are we on target? ✓=Exceeded it, ◻=Within 10%, ✗=Missed it

Code	Performance Indicator	2011/12 Value	Annual Target 2011/12	Current Performance				Future Targets			Latest Notes
				Actual 2012/13	Target 2012/13	Have we improved?	Are we on target?	2013/14	2014/15	2015/16	
Thriving Economy											
NI 155	Number of affordable homes delivered (gross)	33	35	36	30	↑	✓	24	23	23	
Sustainable Environment											
HS1	Households receiving heating/insulation improvements (per quarter)	227	8	143	9	↓	✓	9	50	50	
NI 192	Percentage of household waste sent for reuse, recycling and composting (Cumulative)	33.49%	34.00%	32.48%	34.50%	↓	◻	35.00%	40.00%	50.00%	
NI 195a	Street cleanliness indicator (Levels of Litter)	1.50%	3.00%	1.00%	3.00%	↑	✓	3.00%	3.00%	3.00%	
NI 195b	Street cleanliness indicator (Levels of Detritus)	4.25%	5.00%	3.00%	5.00%	↑	✓	5.00%	5.00%	5.00%	
NI 195c	Street cleanliness indicator (Levels of Graffiti)	0.00%	2.00%	0.00%	2.00%	↔	✓	2.00%	2.00%	2.00%	
NI 195d	Street cleanliness indicator (Levels of Fly-posting)	0.00%	1.00%	0.00%	1.00%	↔	✓	1.00%	1.00%	1.00%	
NI 196	Improved street and environmental cleanliness - fly tipping	2	2	2	2	↔	✓	2	2	2	

Key: Have we improved compared to 2011/12? ↑=Better, ↔=Same, ↓=Worse. / Are we on target? ✓=Exceeded it, □=Within 10%, ✗=Missed it

Code	Performance Indicator	2011/12 Value	Annual Target 2011/12	Current Performance				Future Targets			Latest Notes
				Actual 2012/13	Target 2012/13	Have we improved?	Are we on target?	2013/14	2014/15	2015/16	
Safe Communities											
NI 15	Serious violent crime rate	0.17	0.25	2.79	Not Set	↓	-	2% reduction on EOY figure	t.b.a.	t.b.a.	PI change - police recording more types of violent crime now included in this performance figure
NI 16	Serious acquisitive crime rate	16.97	18	15.63	16.12	↑	✓	2% reduction on EOY figure	t.b.a.	t.b.a.	
NI 16a	Domestic burglaries per 1,000 households	14.1		11.88	Not set	↑	-	2% reduction on EOY figure	t.b.a.	t.b.a.	
NI 16b	Robberies per 1,000 Population	0.5		0.6	Not set	↓	-	2% reduction on EOY figure	t.b.a.	t.b.a.	
NI 16c	Theft of vehicle incidents per 1000 population	1.6		1.5	Not set	↑	-	2% reduction on EOY figure	t.b.a.	t.b.a.	
NI 16d	Theft from vehicle incidents per 1000 population	8.85		8.61	Not set	↑	-	2% reduction on EOY figure	t.b.a.	t.b.a.	
Health and Well-being											
C & YS 01s	Number of young people taking part in sports development programmes (4 monthly)	1,960	1,500	2,847	1,800	↑	✓	1,800	1,800	1,900	
NI 181	Time taken to process Housing Benefit/Council Tax Benefit new claims and change events	8.8	13	10.1	12.5	↓	✓	12.5	12.5	12.5	
Cohesive and Strong Communities											
ES1a	% of canvass forms returned	99%	96%	99%	96%	↔	✓	96%	90%	90%	

**Prepared by Policy & Performance,
South Bucks District Council.**